A photograph of a school staircase with large windows in the background. Several students with backpacks are walking up and down the stairs. The image is slightly faded to allow text to be overlaid.

Commissioner's Comments State Board of Education

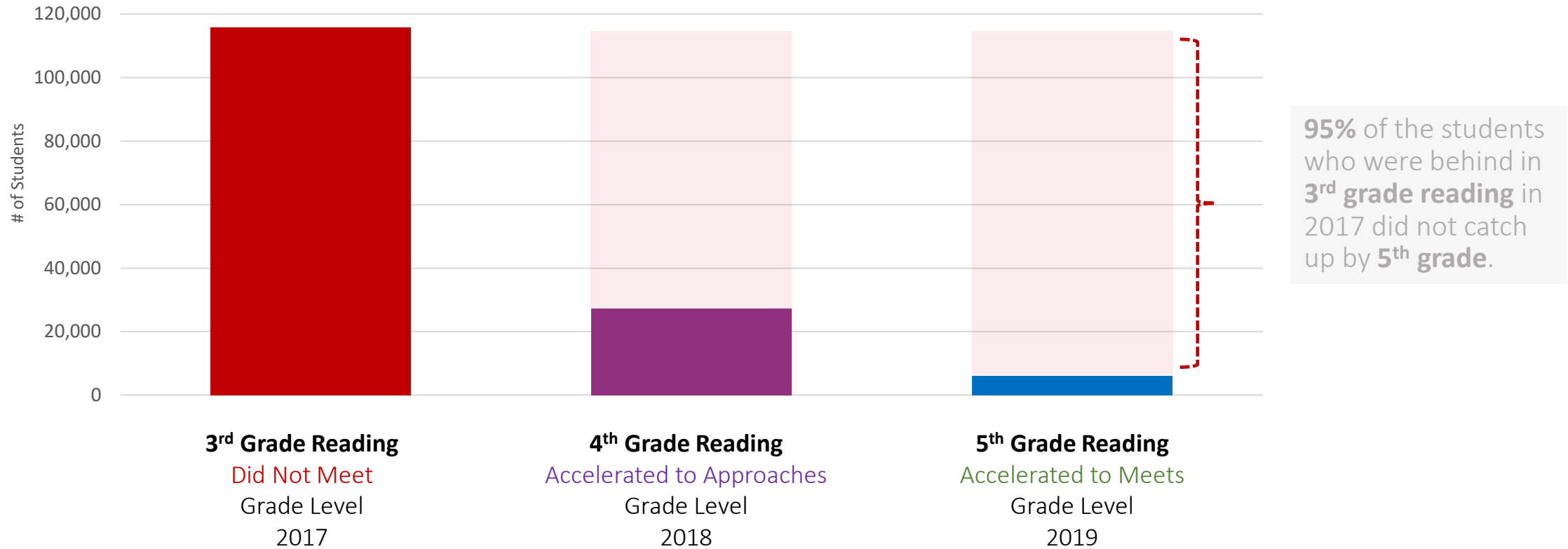
June 23, 2021

Legislation



The Actions We Take Now Must Be Different From What We've Done In The Past

Pre-COVID: # of Students Accelerating Up A Performance Level Each Year



Across all grades and subjects, on average, only 4% of students who are below grade level catch up to grade level in 2 years

The 87th Legislature addressed through new requirements and funding

Grade-Level Promotion



- [SB 1697](#) – Allows parents to determine whether or not students repeat a grade or course
- [HB 4545](#) – Students no longer required to be retained for failed STAAR attempts in 3-8

Learning Acceleration



- [HB 4545](#) – Creates requirements and additional supports for accelerated instruction for students scoring behind grade level on STAAR and EOCs
- [HB 1525](#) – Directs state and federal funding for accelerated learning supports

Tutors



- [SB1356](#) – Creates retired teacher tutor registry
- [SB 288](#) – Addresses benefits when hiring retired teachers, as potential source of tutors

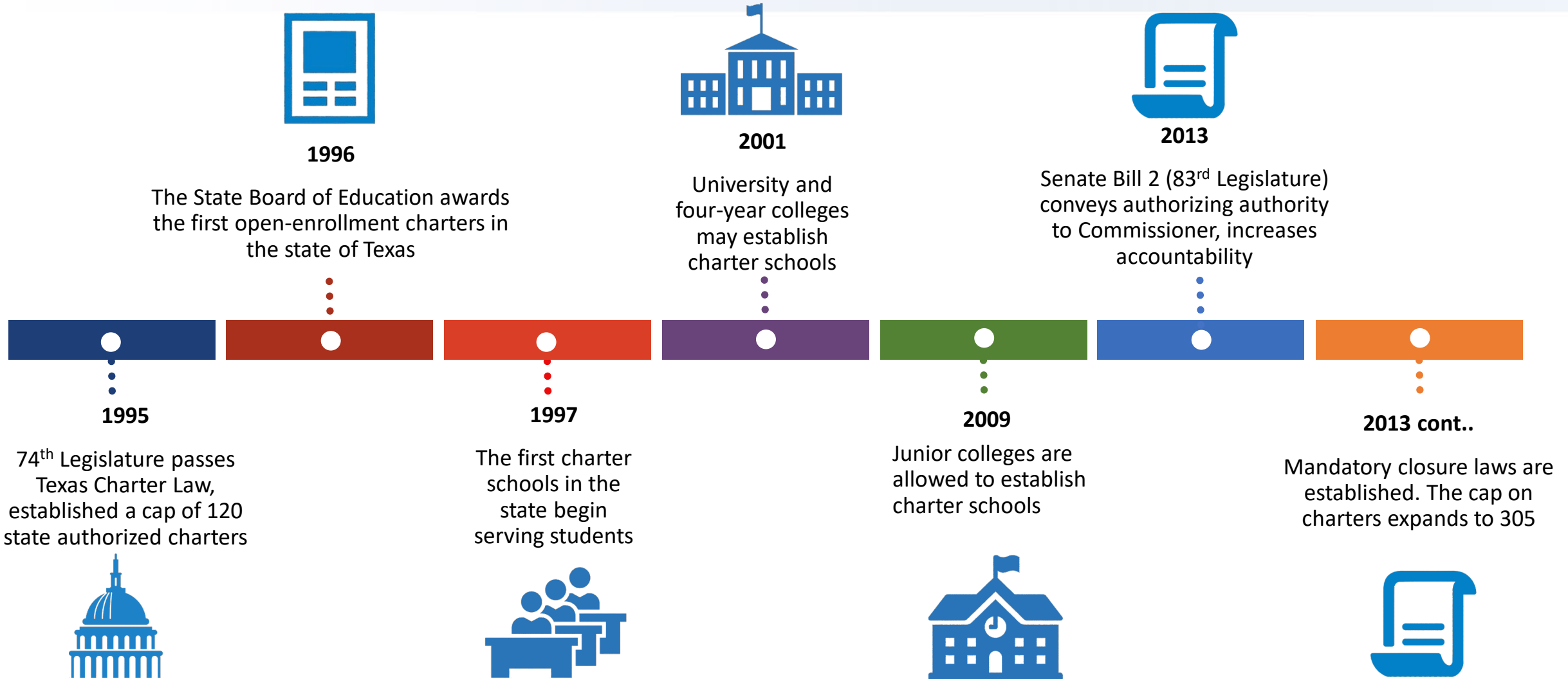
Federal Funding

General Revenue and ESSER Funding for COVID Recovery Programs		
CCR SB1, Art. IX, Sec. 18.15(c)	Gen Rev	ESSER
(1) Changes in Instructional Practice	\$ 406.0	\$ 944.0
(2) Career-focused High Schools (e.g., PTECH)	\$ 118.0	\$ -
(3) High-Dosage Tutoring	\$ -	\$ 100.0
(4) OpConn/Broadband - Support LEAs	\$ -	\$ 8.0
(5) Dyslexia and Autism Grants	\$ 100.0	\$ -
(6) Minimum COVID Funding	\$ -	\$ 46.0
(7) Learning Accel. Funding for Low ESSER LEAs	\$ -	\$ 161.0
(8) Reimburse Uri costs	\$ 35.0	\$ -
(9) At-risk and transitional child care	\$ 5.0	\$ -
CCR SB1, Art. IX, Sec. 18.15(j)	Gen Rev	ESSER
OpConn technology reimbursements	\$ -	\$ 390.0
Total	\$ 664.0	\$ 1,649.0

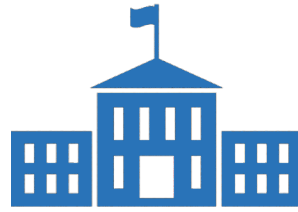
Dyslexia Handbook

Charter Background Information

This School Year Marked the 25th Year of Texas Charter Law

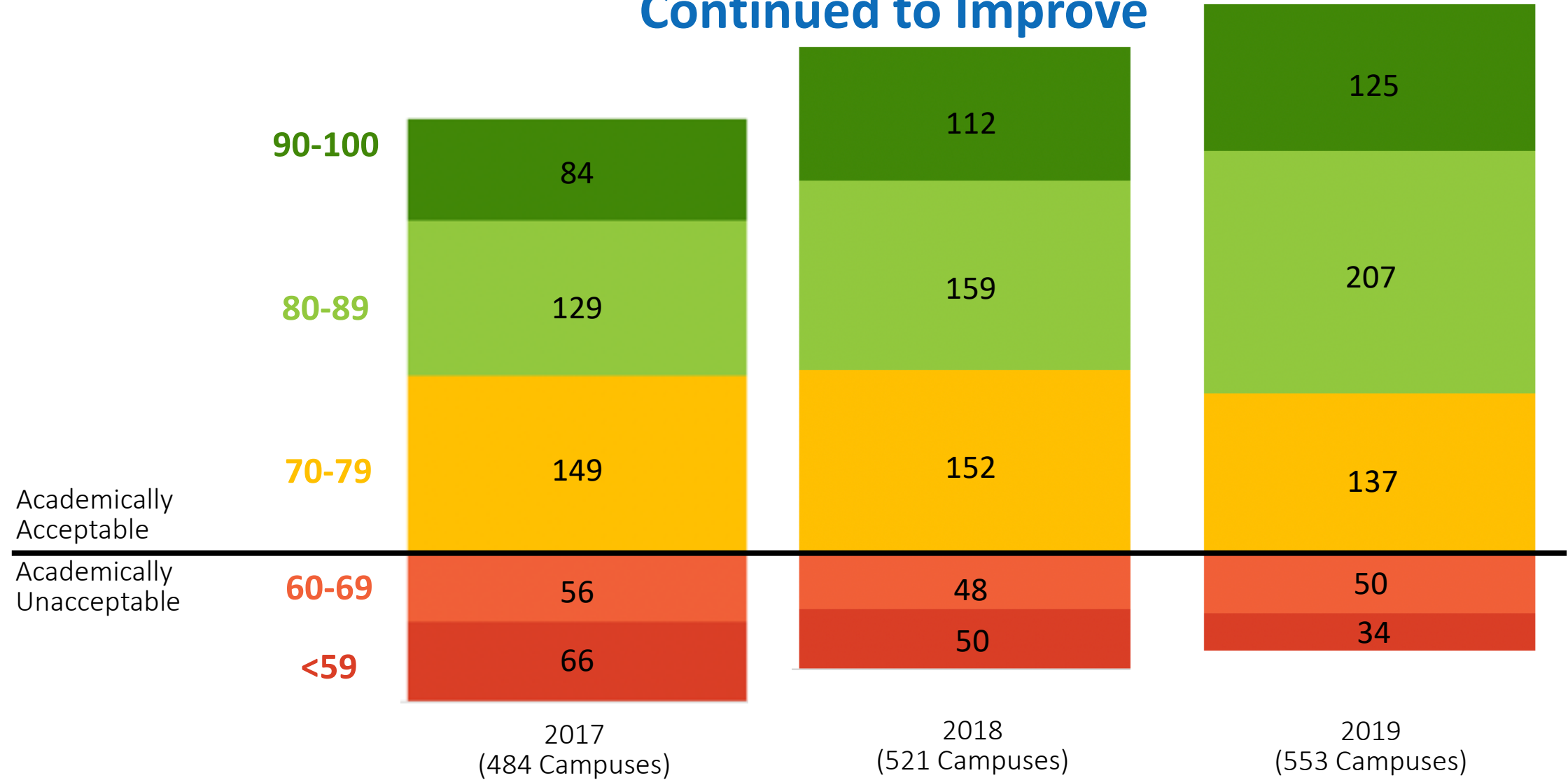


6.7% of Texas Public School Students Choose to Attend Charter Schools



	LEAs	Campuses	Students
State total	175	795	361,894
% of state	14.4%	8%	6.7%

Prior to COVID, the Performance of the Charter School Sector Continued to Improve



Ratings & counts include only schools rated on non-alternative accountability system



Charter Schools Must Perform, Or They Are Closed

Charters since 2013

Charter LEAs Closed

41

Charter Campuses Closed

80

Charter School Accountability

- Charter schools and traditional ISDs are both subject to the accountability provisions of Chapters 39 and 39A
- Charter schools are also held to additional rigorous performance standards

“Three Strikes”

- Charter schools that receive an unacceptable district rating or fail Charter FIRST financial rating system for three consecutive years must be revoked
- Traditional ISD campuses have 5 years before Commissioner sanction of closure or Board of Managers

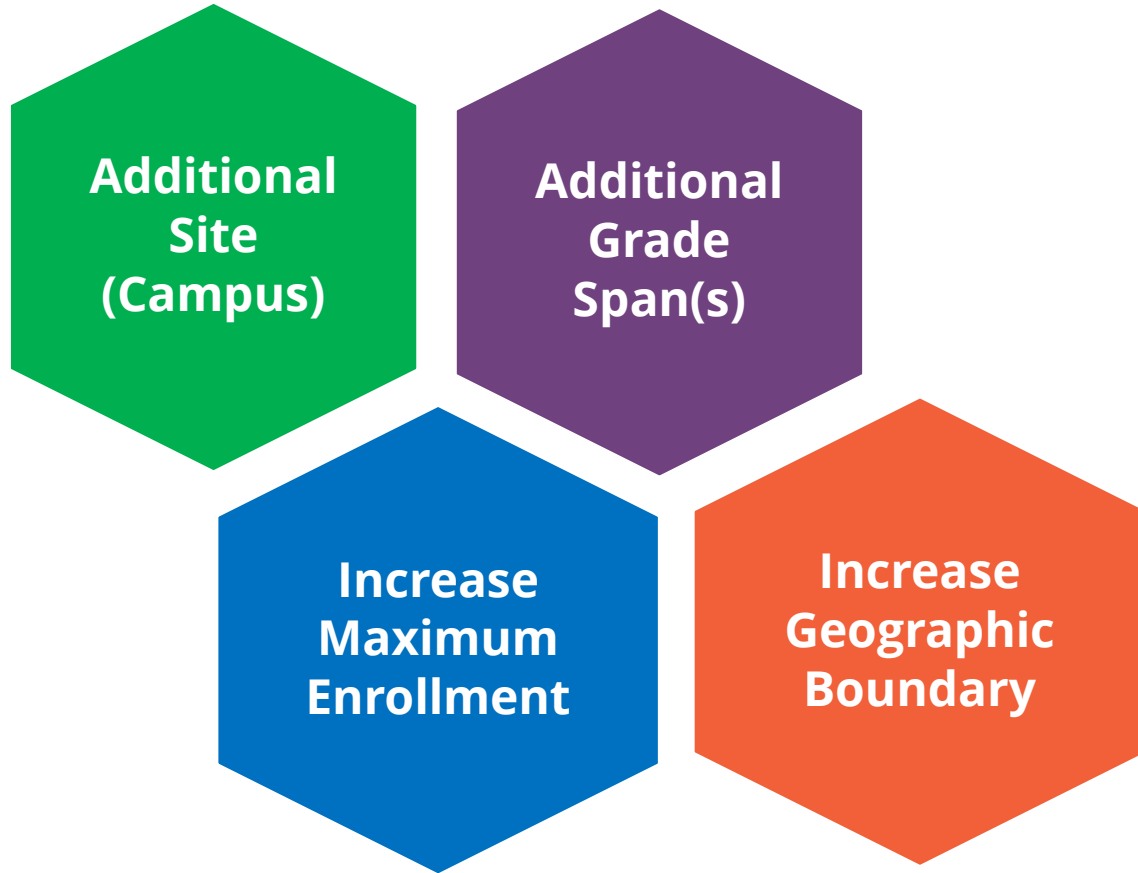
Charter School Performance Framework

- Persistent low performance on the charter school performance framework may result in discretionary revocation of charter school contracts

Non-Renewal Standards

- Contracts are renewed after 5 years and then every 10 years
- An unacceptable rating on a campus for three years preceding a renewal year results in automatic non-renewal unless the campus is closed

Charter Schools May Expand Through Four Types of Expansion Amendments and Meet Performance Criteria to Qualify



- Most recent district rating for the charter school is academically acceptable
- Most recent campus rating for at least 90% of the campuses under the charter school is academically acceptable
- Most recent Charter FIRST rating is satisfactory, and
- Most recent designation for the charter school under the CSPF is Tier 1 or Tier 2

Generation 26 Charters

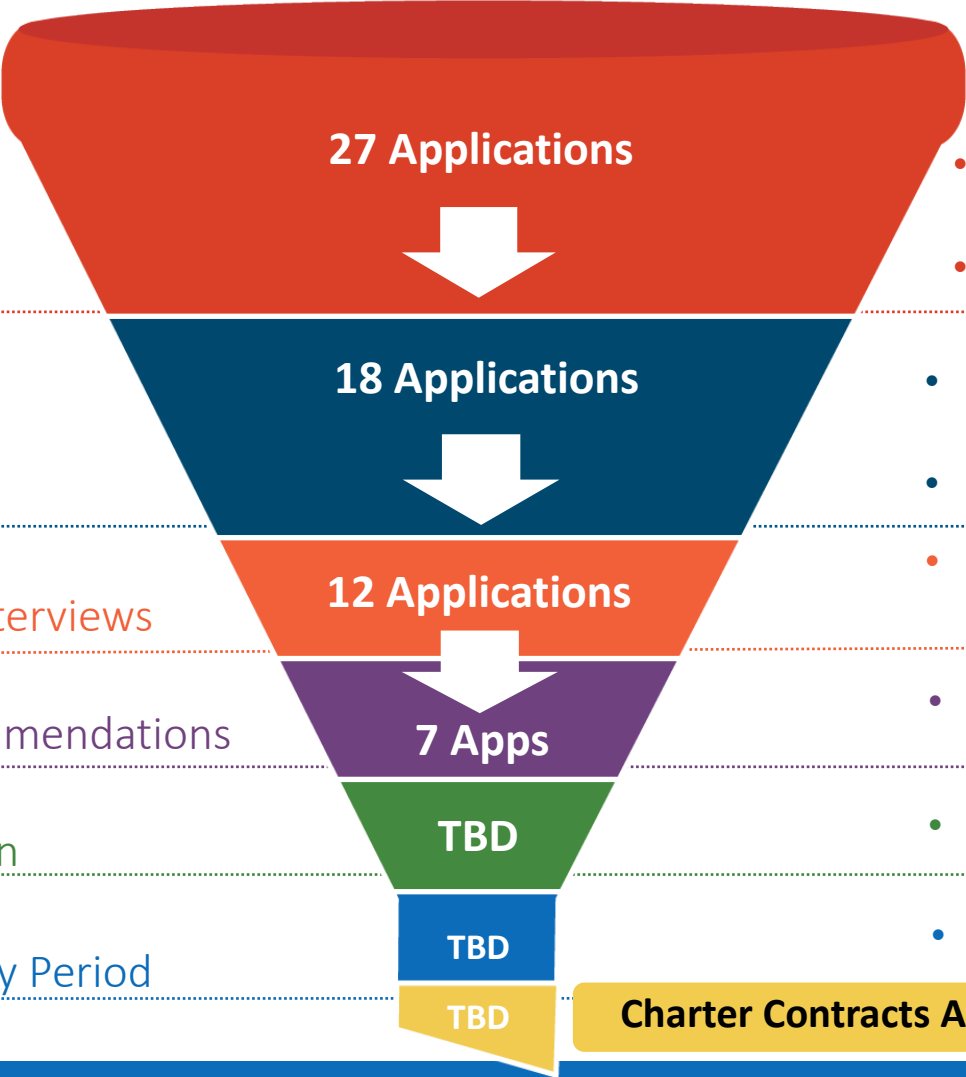
Since 2013, Just 13.7% of Charter Applicants Have Been Approved



National Association of Charter School Authorizers (NACSA) reports that TEA approves fewer new charter applicants, as a percentage of applicants, than any other large charter school authorizer. The 20 largest authorizers in the US approve 39% of their new charter applications.

27 Applications Received

Generation 26 Application Summary



Review 1:
Minimum Standard Review

- TEA reviews applications for eligibility and completion against a minimum standard
- TEA offers applicants the opportunity to submit any missing items

Review 2:
External Review

- Applications reviewed by panel of external experts in charter school authorizing
- Must score at least 85% of available review points to advance to interviews

Review 3:
Capacity Interviews

- TEA conducts capacity interviews to address areas identified after external and internal reviews; SBOE members optionally attend

Review 4:
COE Recommendations

- Commissioner determines which applicants to recommend for approval

Review 5:
SBOE Action

- SBOE considers COE recommendations; ability to veto recommendations.

Review 6:
Contingency Period

- TEA reviews to ensure all contingencies have been addressed



Next Steps: Contingency Period and Contract Execution

Contingency Period

- Texas public charter schools must comply with all requirements of Texas Education Code
- After SBOE action, potential charter organizations have up to 60 days to address any contingencies
- Contingencies must be met before the Commissioner issues and executes a contract to operate a Texas public charter school

Potential Contingencies

- Final alignment of any curriculum to the Texas Essential Knowledge and Skills and any statutory requirements
- Clarification of the organizational structure
- Clarification regarding discipline policy
- Clarification of contracted service fees
- Clarification of plans for serving students with disabilities and staffing capacity
- Revised board bylaws or policies
- Revised admissions policies

Seven Recommended New Charters

- Essence Preparatory Charter School (San Antonio)
- Heritage Classical Academy (Houston)*
- The Justice Hub (Houston)
- Red Brick Academy (Aldine)
- Rocketship Public Schools (Fort Worth)*
- S.H. James Preparatory Academy (San Antonio)
- Thrive Center for Success (Magnolia)*

* Returning applicants.

Recommended for Approval: **Essence Preparatory Charter School**

Mission:

Essence Preparatory Charter School, through rigorous academics, intentional character development, and cultivating scholar knowledge of self, prepares all kindergarten through eight grade scholars to excel in high school, college, and beyond as leading change agents of their communities.

**ESSENCE
PREPARATORY
PUBLIC SCHOOL**

Founding Team:

Proposed Superintendent: Akeem Brown – Prior roles in charter school leadership, former Chief Operations Director/Interim CEO of San Antonio for Growth on the Eastside (SAGE)

Board Chair: Brian Dillard – Third-generation Eastside San Antonio Native, Chief Innovation Office for the City of San Antonio, Veteran U.S. Air Force

Location/Enrollment:

Proposed Location: San Antonio

D/F Campuses in Boundary: 64

Number of Campuses: 1

Grade Spans: K–8

Enrollment at Capacity: 1,080

Focused on building next generation of engaged citizens on San Antonio's Eastside

Contingencies:

- Finalized transportation service agreement
- Updated organizational chart and fiscal year selection
- Revised admissions, discipline, and conflict of interest policies

Highlights:

- Extended learning time with longer school day and year
- Character development through VITALS program
- Community leadership focus with frequent community-based field lessons
- Robust sports programming
- Restorative practices

Recommended for Approval: Heritage Classical Academy

Mission:

Provide a focused classical education to a diverse community of primary and secondary scholars by developing their knowledge to a state of wisdom and character to a state of virtue and by preparing them as well-educated, self-governing citizens and leaders for the next generation of America.



Founding Team:

Proposed Superintendent: Oscar Ortiz – Former teacher and school leader with 5+ years of classical education experience

Board Chair: Stuart Saunders – Managing partner of Mission Heights Ltd, decades of experience with finance and banking, previous education organization board experience

Highlights:

- Classical education model
- Introduction of Latin Roots in 4th/5th grades and study of Latin in 6th
- Early science labs
- Affiliate of Hillsdale College’s Barney Charter School Initiative
- Diverse by design recruitment strategies

Location/Enrollment:

Proposed Location: Houston
D/F Campuses in Boundary: 83
Number of Campuses: 1
Grade Spans: EE – 8
Enrollment at Capacity: 1,056

Open-enrollment classical education model to be offered in Northwest Houston (north of I-10)

Contingencies:

- Revised Articles of Incorporation
- Revised board bylaws related to TOMA and compensation
- Clarification of grant dollars received and administrative salaries

Recommended for Approval: The Justice Hub

Mission:

The Justice Hub School empowers students to acquire the essential skills and social capital that position them to reach and exceed their highest aspirations for college and career success.



Founding Team:

Proposed Superintendent: Marvin Pierre – Executive Director of Eight Million Stories, previous TNTP Bridge Fellow, former Asst. Principal at KIPP Polaris (Houston), 4 years of experience as a charter school dean

Board Chair: Russell Ramsey – Director of Learning and Evaluation at Houston Endowment, former teacher and charter school leader with 10+ years of education and research experience

Highlights:

- Designed to serve at-risk students who need additional supports to be well-prepared for a variety of post-secondary opportunities
- Personalized graduation plans created with students
- Restorative practices
- Robust partnerships with diverse community organizations

Location/Enrollment:

Proposed Location: Houston

D/F Campuses in Boundary: 10

Number of Campuses: 1

Grade Spans: 9 – 12

Enrollment at Capacity: 400

Seeking to address a lack of quality seats for at-risk HS students in the Southwest Houston community

Contingencies:

- Revised board bylaws related to board membership & delegation
- Clarification of staffing pattern and financial plan workbook
- Revised HR forms for ELA teachers related to ESL certification

Recommended for Approval: Red Brick Academy

Mission:

Provide all students with an equitable educational experience in an inclusive environment that prepares them for success in college and the career of their choosing.



Founding Team:

Proposed Superintendent: Brittney Jean-Louis – Texas native with 10+ years of charter school teaching & leadership experience

Board Chair: Joel Muñoz – Native Houstonian with 15 years of charter school and traditional ISD experience, current charter school principal

Highlights:

- Inquiry-based instructional approach with deep focus on literacy and math
- Extended learning time with longer school day and year
- 40 days of professional development annually
- Trauma-informed restorative practices

Location/Enrollment:

Proposed Location: Aldine

D/F Campuses in Boundary: 85

Number of Campuses: 1

Grade Spans: 5 – 8

Enrollment at Capacity: 760

Seeking to open a high-performing middle school option with a focus on college readiness

Contingencies:

- Revised admissions and enrollment policy
- Clarification of future Director of Special Education certification requirements

Recommended for Approval: Rocketship Public Schools

Mission:

To catalyze transformative change in low-income communities through a scalable and sustainable public school model that propels student achievement, develops exceptional educators, and partners with parents who enable high-quality public schools to thrive in their community.



ROCKETSHIP
PUBLIC SCHOOLS

Founding Team:

Proposed Superintendent: SaJade Miller – Experienced educational leader with cabinet level experience in Ft Worth and DeSoto ISDs, track record of successful school leadership in FW community

Board Chair: Peter Philpott – Decades of experience in financial advisory services, including nearly 10 years as VP of Robert W. Baird Limited

Location/Enrollment:

Proposed Location: Fort Worth

D/F Campuses in Boundary: 57

Number of Campuses: 4

Grade Spans: PK – 5

Enrollment at Capacity: 2,776

Focusing on areas of need measured by D/F schools and % of Economically Disadvantaged students

Contingencies:

- Finalized CMO agreement aligned to Texas Education Code
- Revised procurement and conflict of interest policies
- Revised board member roster

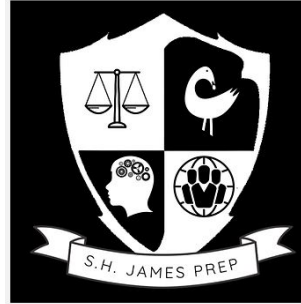
Highlights:

- Proven model with success in 4 states, including top 10% performance among similar schools in CA and WI, among highest growth schools in TN, and top ratings in DC
- Board includes former Superintendent of Fort Worth ISD and community leaders with financial, legal, and prior board expertise
- Innovative, best-in-class personalized learning model

Recommended for Approval: S.H. James Preparatory Academy

Mission:

To mobilize 5th – 12th grade students using a personalized, literacy-based curriculum to cultivate self-aware, innovative thinkers with an entrepreneurial mindset who are civic and global leaders of the future



Founding Team:

Proposed Superintendent: Anthony Gordon – 13 years of charter school, ISD, and private school experience

Board Chair: Dr. Milton Harris – Owner/broker MB Harris Properties, Executive Director of 100 Black Men of San Antonio, President Van Courtlandt Foundation, Veteran U.S. Air Force

Highlights:

- Project/inquiry-based learning pods based on student interest
- Focus on community-based service and entrepreneurship
- Three personalized graduation pathways with a focus on advanced placement, entrepreneurial leadership, or distinguished achievement

Location/Enrollment:

Proposed Location: San Antonio

D/F Campuses in Boundary: 57

Number of Campuses: 1

Grade Spans: 5 – 12

Enrollment at Capacity: 800

School focused on building local leaders through civic and community engagement

Contingencies:

- Revised board bylaws related to TOMA, delegation, amendments
- Clarification of special education staffing plans
- Alignment of instructional materials to Texas Education Code

Recommended for Approval: Thrive Center for Success

Mission:

To cultivate a high quality, innovative environment for individuals with autism that provides access to services needed to empower each individual to thrive



Founding Team:

Proposed Superintendent: TBD

Board Chair: Dr. Ronny Knox - current Supt., Sam Houston State University charter school, 32 years of education experience

Board Members: Local faith leaders, former licensed specialist in School Psychology, parents of children with Autism, Director of the Brown Foundation, financial officer of MHW real estate

Highlights:

- Personalized individual learning plans or individualized education program for every student
- Use of Comprehensive Application of Behavior Analysis to Schooling (CABAS) to implement applied behavior analysis (ABA)
- Flexible multi-age grouping
- Inclusion events with other charter schools

Location/Enrollment:

Proposed Location: Magnolia

D/F Campuses in Boundary: 329

Number of Campuses: 1

Grade Spans: K – 12

Enrollment at Capacity: 336

Open-enrollment model seeking to meet the need of students academically while also providing ABA therapy

Contingencies:

- Revised admission, discipline, and conflict of interest policies
- Revised board bylaws and articles of incorporation
- Established policies with regards to separate Thrive Foundation